

## Portable LEEB Hardness tester THL-210



### Features

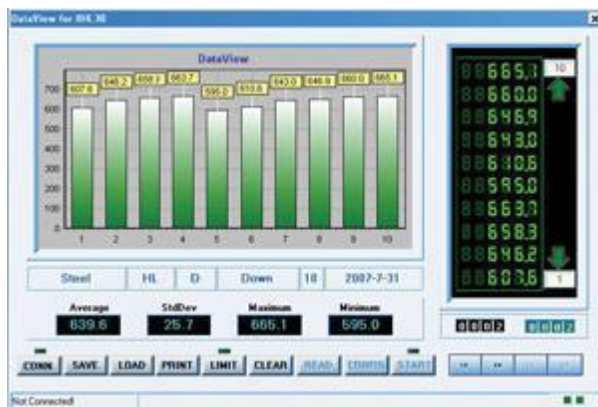
- LCD display of 128×64 matrix with back-light, showing all functions and parameters.
- Converts to all common hardness scales (HV, HB, HRC, HRB, HRA, HS).
- English displaying and easy and convenient menu operation.
- Powerful PC Software available and USB 1.0 interface and USB with Protective Membrane.
- 7 types of Impact Device optional, which don't need to be recalibrated when changing them.
- Memory of 600 groups data (impact times: 32~1) .
- Lower limit setting and sound alarm. Material of “cast steel” is added; HB values can be read out directly when D/DC impact device is used to measure “cast steel” work piece.
- Copies of testing results can be printed as required with an additional portable printing unit.
- Inbuilt function for Calibration.

### Specifications

Hardness scale	HL, HB, HRB, HRC, HRA, HV, HS
Memory	48~600 groups (impact times: 32~1)

Measuring range	HLD (170~960) See below table 1 and table 2
Accuracy	±6HLD (760±30HLD) error of displayed value
Standard Impact Device	D
Optional Impact Devices	DC/D+15/G/C/DL
Min. Radius of Workpiece	Rmin = 50mm (with special support ring Rmin= 10mm)
Min. Workpiece weight	2~5kg on stable support
0.05~2kg with compact coupling	
Min. Workpiece thickness	5mm (Impact Devices D/DC/DL/D+15)
1mm (Impact Device C)	
10mm (Impact Device G)	
Min. thickness of hardened surface	0.8mm
Power	Normal AA Battery
Continuous Working time	approx. 100 h (no back light off)
Operating temperature	0~40°C
Relative humidity	≤90%
Overall dimensions	125*67*31mm (main unit)
Weight	0.3kg (main unit)

## Datapro for Hardness tester THL210



## Standard Configuration

Seq	Name	Qty	Remark
1	THL210 Main Unit	1	Standard configuration
2	Impact Device Type D	1	Standard configuration
3	Leeb Standard Test Block	1	Standard configuration
4	Cleaning Brush	1	Standard configuration
5	Supporting Ring	1	Standard configuration

6	Communication Cable	1	Standard configuration
7	Manual	1	Standard configuration
8	Hard shell Carrying Case	1	Standard configuration
9	THL210 DataPro Software(USB)	1	Standard configuration
10	Mini-printer	1	Optional configuration